



DOC'S INDUSTRIES, INC.

Report No.: 071720-FD
Date: July 17th, 2020
Page: 2 of 2

4121 Guardian St. • Simi Valley, CA 93063 • Tel: 805-583-9911 • Fax: 805-583-9946

SHEAR TESTING OF DOC'S® 1/8" POP RIVETS

Procedure:

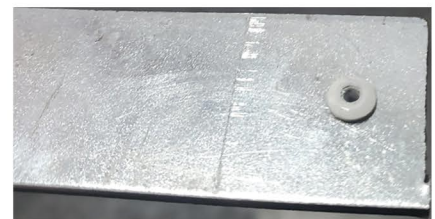
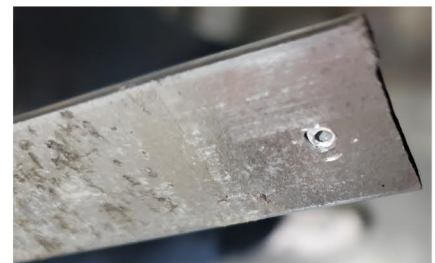
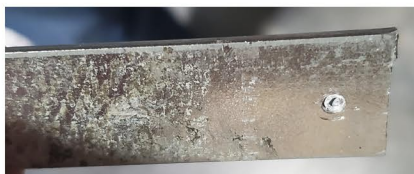
The 1/8" pop rivets were installed to 0.0745" (14 GA) steel flat bar that was secured to the table on the Instron® universal test machine. The 1/8" pop rivets were pulled in shear at a rate of 0.5 inches per minute. They were pulled to failure and the ultimate loads recorded. The failure method was the pop rivet shearing.

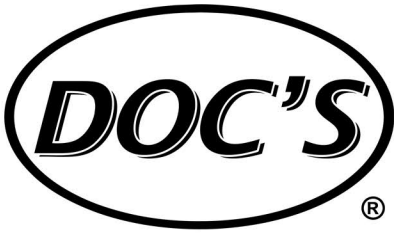
Testing was conducted on July 16th, 2020.

Results:

The results of testing are summarized in the following:

Table with 2 columns: Unit, Ultimate Load (lbs.) and 5 rows of data for 1/8" POP RIVETS, plus an Average row.





**DOC'S INDUSTRIES, INC.**

**Report No.:** 071720-FD  
**Date:** July 17th, 2020  
**Page:** 1 of 2

4121 Guardian St. • Simi Valley, CA 93063 • Tel: 805-583-9911 • Fax: 805-583-9946

**Test Report No:** 071720-FD

**Date:** July 17, 2020

**SAMPLE ID:** The following test material was randomly selected at Doc's Industries, Inc., 4121 Guardian St., Simi Valley, CA 93063 by a Doc's Industries, Inc. representative on July 17, 2020.



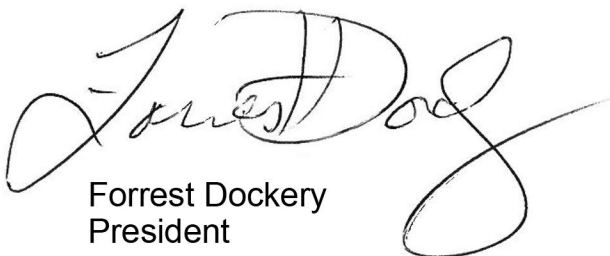
5 each, 1/8" Pop rivets, Part Number's:  
DWR-100P, DWR-500P, DWR-1000P, DWR-10000B  
DBR-100P, DBR-500P & DBR-1000P

**TESTING PERIOD:** July 17th, 2020.

**TESTING RESULTS:** Refer to page 2 for results.

**Testing Conducted By:**

**Singed for and on behalf of  
Doc's Industries, Inc.**



Forrest Dockery  
President



Ricardo Ochoa  
General Manager