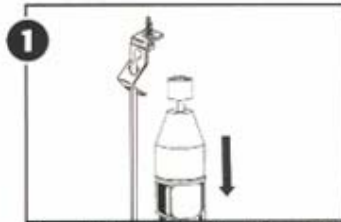


How to Use a 1/4

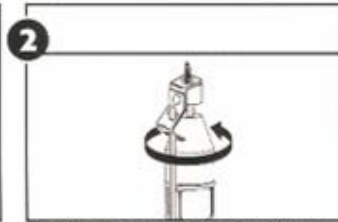
Turn your pole tool into a very long screwdriver.

This Lagmaster Plus plug works with any 1/4" hex driver.

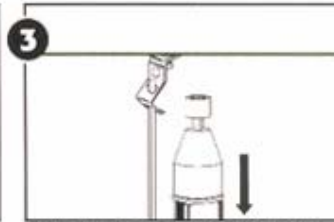
Install smooth rod with a Minerallac™ or Caddy™ spring clip assembly and screw.



1 Plug in the Lagmaster Plus 1/4" hex head and insert the proper 1/4" driver. Adjust the Lagmaster pole tool to length.



2 Push the smooth rod between the pole and the wire bale on the Lagmaster adjusting pin to keep the rod from whipping while turning in the screw for safety.



3 Turn in the screw cautiously being careful not to over torque or strip the screw. Remote the tool.

